



50 YEARS OF WOMEN AT KING'S FESTIVAL

Saturday, 24 June 2023



FESTIVAL PROGRAMME



WELCOME TO THE 50 YEARS OF WOMEN AT KING'S FESTIVAL

It is a great pleasure to welcome you to this Festival of 50 Years of Women at King's.

In 1972 King's was one of the first of the Cambridge all-male Colleges to admit women as students, alongside Clare and Churchill. Today is the culmination of a year-long programme of events to mark the anniversary. We're bringing together scholars, writers, musicians, poets, changemakers and more, to celebrate the impact of King's women; as well as looking at what still needs to be done to address the inequalities that remain.

We have a jam-packed day of talks, conversations, poetry and music, alongside tours, exhibitions and children's activities. King's has always been a place to explore new ideas and different ways of thinking, and we hope you will feel engaged and inspired by what you see and hear today.

Thank you to our speakers, performers and contributors and to the King's Fellows, staff, students and volunteers who have made it all happen; and to you for joining us.

I hope you have a wonderful day.

**Professor Michael Proctor FRS,
Provost**

FROM 10.00AM

10.00am - 10.30am

MUSIC

Bridge Tent

LIVE JAZZ

Get the day underway with a swing with live jazz in the Bridge Tent.

10.00am - 6.30pm

EXHIBITION

Chapel

50 PORTRAITS - AN EXHIBITION

The launch of a major new exhibition of 50 commissioned portraits of King's women by award-winning photographer **Jooney Woodward**, featuring students, staff, Fellows and alumnae.

The exhibition will remain in the Chapel after the Festival, and after the close of the exhibition the portraits will become part of the College's permanent art collection.

10.00am - 5.30pm

FAMILY-FRIENDLY ACTIVITY

*Family Activity Tent,
Back Lawn*

ART WORKSHOPS

Nature-inspired art workshops will take place in the Family Activity Tent throughout the day.

Suitable for all ages.

10.30am - 11.30am

PANEL DISCUSSION

Meadow Tent

PAST AND PRESENT: THE HISTORY OF WOMEN AT KING'S

Author and academic **Lucy Delap** (KC 1997) is joined by King's Fellows **Tess Adkins** (KC 1972), **Stephen Hugh-Jones** (KC 1964) and **Rosanna Omitowoju** (KC 1987) to uncover the history of women in Cambridge and the landmark decisions to admit women to King's in 1972.

FROM 10.00AM

10.30am - 11.30am **FAMILY-FRIENDLY** **TOUR**

Meeting Point:
Bodley's Court

FAMILY-FRIENDLY TOUR OF THE COLLEGE GARDENS

College gardener **Lou Singfield** leads a family-friendly tour of the gardens (including a lollipop hunt!).

Meet in Bodley's Court 5 minutes before the start time. Pre-booked tickets only – tour fully booked.

10.30am - 11.30am **TOUR**

Meeting Point:
Bodley's Court

TOUR OF THE COLLEGE GARDENS

Take a walk around the beautiful King's gardens with Head Gardener **Steven Coghill**, including the Provost's garden and the Fellows' Garden. Learn about the College's biodiversity projects, hear about plans for the future and pick up a few tips from Steven on the way.

Meet in Bodley's Court 5 minutes before the start time. Pre-booked tickets only – tour fully booked.

10.30am - 11.30am **TOUR**

Meeting Point: Hall

TOUR OF THE COLLEGE ART COLLECTION

Art historian **Sophie Pickford** (KC 1997) hosts a walking tour of the College's wide-ranging art collection, visiting some notable pieces by and featuring women, from Vanessa Bell to Anne Rothenstein.

Meet in Hall 5 minutes before the start time. Pre-booked tickets only – tour fully booked.

10.30am - 11.00am **TALK**

River Tent

NOVEL IDEAS: BRIDGET COLLINS

Bestselling author of *The Binding*, *The Betrayals* and seven young adult fiction books **Bridget Collins** (KC 1999) reads from her novels and discusses the background to them with **Laura Davies** (KC 2016).

Suitable for ages 14+.

FROM 11.00AM

11.00am - 12.00pm

FAMILY-FRIENDLY ACTIVITY

*Family Activity Tent,
Back Lawn*

ARCHAEOLOGICAL DIG

Join King's College Research Associate **Edgard Camarós** (KC 2021) and Research Fellow **Katie Campbell** (KC 2020) to discover some amazing bones and artefacts in a special archaeological dig.

11.00am - 1.00pm

EXHIBITION

Audit Room

FROM THE COLLEGE ARCHIVES

Women have been a vital part of the King's community since its foundation in 1441.

This exhibition from the College Archives looks at this rich history and in particular at the remarkable changes that took place in the 100 years between the founding of Girton and Newnham and the first admission of women as undergraduate students at King's in 1972.

Re-opens at 2.00pm.

11.15am - 12.00pm

TALK

River Tent

THE PHILOSOPHER QUEENS

Rebecca Buxton (KC 2021) and **Lisa Whiting** offer an introduction to the history of philosophy told through the lens of the women who have shaped the discipline, from the ancient Greek thinker Hypatia to Angela Davis.

Based on their book *The Philosopher Queens*, Rebecca and Lisa tell the stories of prominent women whose ideas have had a profound – but for the most part uncredited – impact on the world.

Suitable for ages 14+.

FROM 11.00AM

11.15am - 12.00pm

TALK

Keynes Hall

CURIOUS MINDS: PATTERNS IN HISTORY

The first in a series of four sessions throughout the day giving King's students and academics five minutes to explain their research.

Introduced by **Anna Alexandrova** (KC 2011), six Research Fellows, College Research Associates and students talk about the mapping of medieval cities, patterns of female employment, and what the archaeological findings from a recent dig at Croft Gardens in Cambridge can tell us about women in the early Middle Ages.

Speakers: Rose Sargent Auriane Terki-Mignot
Anmona Siddaqua Anahita Arian
Georgia Katakou Katie Haworth

11.30am - 12.00pm

YOGA

Bodley's Court

YOGA SESSION

Join the King's Yoga Society for a beginner-friendly yoga class in the lovely grounds of Bodley's Court.

Pre-booked tickets only – fully booked.

11.30am - 12.00pm

MUSIC

River Tent

KWVG

Take a break and enjoy music from KWVG.

FROM 12.00PM

12.00pm - 12.45pm

FAMILY-FRIENDLY TOUR

*Meeting Point:
Meadow*

TOUR OF THE WILDFLOWER MEADOW

A family-friendly tour of the College wildflower meadow and its biodiversity impact, with zoologist **Gabriela Montejo-Kovacevich** (KC 2022).

Meet at the meadow 5 minutes before the start time. Pre-booked tickets only – tour fully booked.

12.00pm - 12.45pm

MUSIC

*Provost's Lodge
Drawing Room*

VIOLIN RECITAL

Join violinist **Vicky Jolliffe** (KC 1982) and **Paul Guinery** (piano) in the Provost's Lodge Drawing Room as they play works by female composers including Judith Weir, Errollyn Wallen, Rebecca Clarke, Amy Beach, Lili Boulanger and Cécile Chaminade.

Pre-booked tickets only – fully booked.

12.00pm - 1.00pm

PANEL DISCUSSION

Meadow Tent

TALKING TECH: POWERING THE FUTURE

Digital entrepreneur **Sarah Wood** (KC 1992), strategist **Rachel Coldicutt** (KC 1992), health-tech director **Rebecca Love** (KC 2015) and Computer Science academic **Marwa Mahmoud** (KC 2010) discuss their experiences as innovators and changemakers in the tech sector.

12.00pm - 4.00pm

FAMILY-FRIENDLY ACTIVITY

KCBC Tent, Back Lawn

TAKE THE BOAT CLUB CHALLENGE!

The King's College Boat Club rowers will be running a family-friendly challenge on their ergs, with prizes for the fastest rowers in each age category! Come and give it a go, and meet the current crews.

12.30pm - 1.30pm

FAMILY-FRIENDLY EXHIBITION

*Family Activity Tent,
Back Lawn*

ANIMAL BONES EXHIBITION

An interactive animal bones exhibition with King's Senior Tutor (and veterinary surgeon) **Myfanwy Hill** (KC 2020).

FROM 12.00PM

12.45pm - 1.15pm

STORYTELLING

River Tent

TALES IN THE TENT

Storyteller **Lara McClure** (KC 1992) joins us for an engaging and interactive performance based on short stories by the writer and former Provost of King's, MR James – renowned for his chilling ghost stories.

Suitable for ages 12+.

12.45pm - 1.30pm

TALK

Keynes Hall

CURIOUS MINDS: WOMEN IN HEALTH AND WELLBEING

The second in a series of four sessions throughout the day giving King's students and academics five minutes to explain their research.

In this session, five King's researchers tackle topics including placental development, immune responses, mental health services for refugees, and the cognitive deficits associated with long Covid. Introduced by **Gillian Griffiths** (KC 1980).

Speakers: Aoife O'Flynn Patrycja Kozik
Luma Bashmi Ashley Moffett
Anna lampolska

1.00pm - 1.30pm

MUSIC

Bridge Tent

JENEM

Relax over lunch with live music from singer-songwriter **Jenem**.

1.15pm - 2.15pm

TOUR

Meeting Point: Hall

TOUR OF THE COLLEGE ART COLLECTION

Art historian **Sophie Pickford** (KC 1997) hosts a walking tour of the College's wide-ranging art collection, visiting some notable pieces by and featuring women, from Vanessa Bell to Anne Rothenstein.

Meet in Hall 5 minutes before the start time. Pre-booked tickets only – tour fully booked.

FROM 1.30PM

1.30pm - 2.30pm

TALK

Meadow Tent

WHY ARE WE ALL SO LONELY NOW? NOREENA HERTZ AND DIANA BARRAN IN CONVERSATION

Are we in a crisis of loneliness? Renowned thought-leader and economist **Noreena Hertz** (KC 1992) and **Diana Barran** (KC 1977), former government Minister for Loneliness, explore why this is set to become the defining condition of the 21st century, and what we can do to reconnect.

2.00pm - 3.00pm

TOUR

*Meeting Point:
Bodley's Court*

TOUR OF THE COLLEGE GARDENS

Take a walk around the beautiful King's gardens with Head Gardener **Steven Coghill**, including the Provost's garden and the Fellows' Garden. Learn about the College's biodiversity projects, hear about plans for the future and pick up a few tips from Steven on the way.

Meet in Bodley's Court 5 minutes before the start time. Pre-booked tickets only – tour fully booked.

2.00pm - 3.00pm

**FAMILY-FRIENDLY
ACTIVITY**

*Family Activity Tent,
Back Lawn*

ARCHAEOLOGICAL DIG

Join King's College Research Associate **Edgard Camarós** (KC 2021) and Research Fellows **Katie Campbell** (KC 2020) and **Katie Haworth** (KC 2021) to discover some amazing bones and artefacts in a special archaeological dig.

2.00pm - 4.00pm

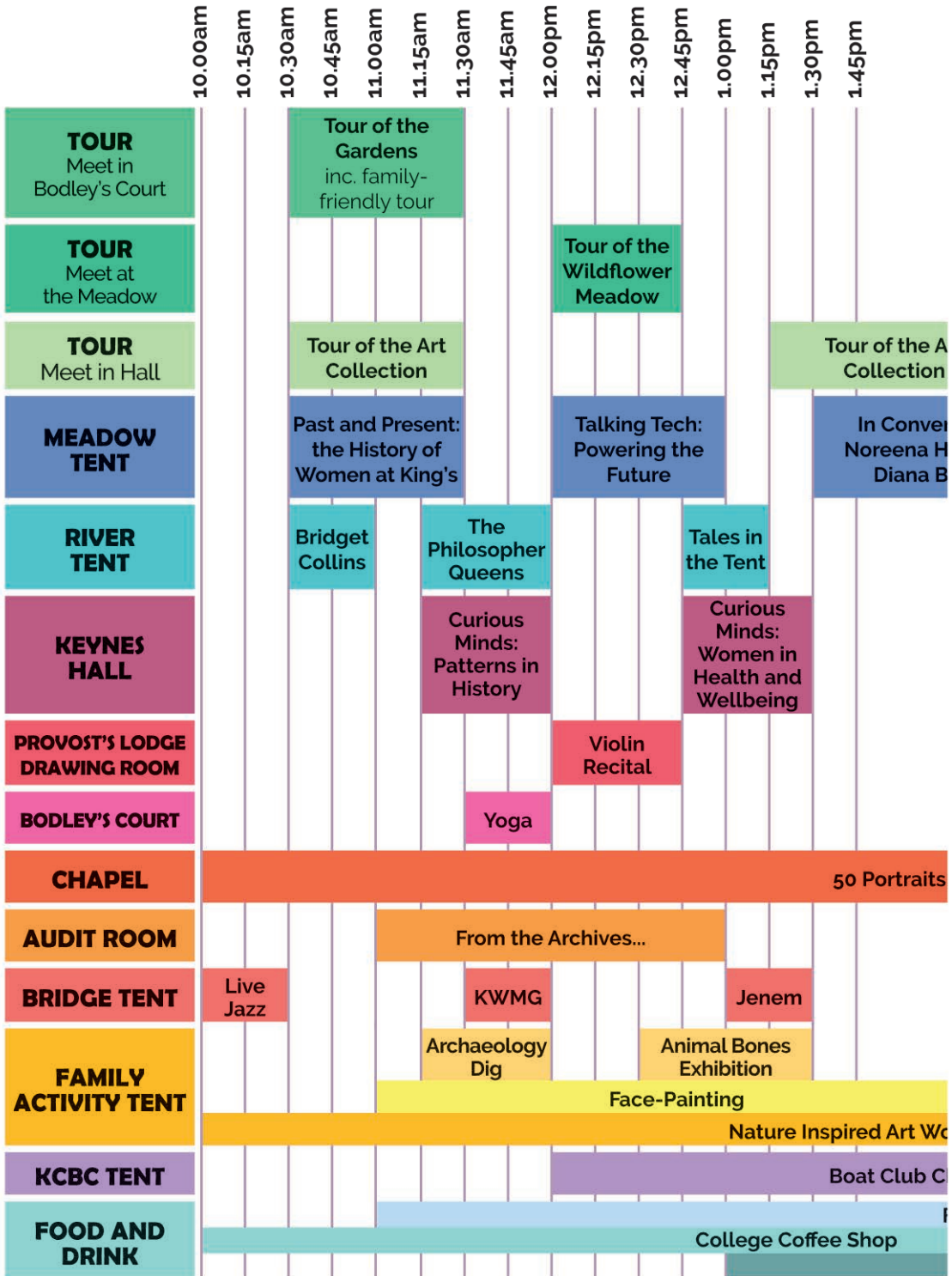
EXHIBITION

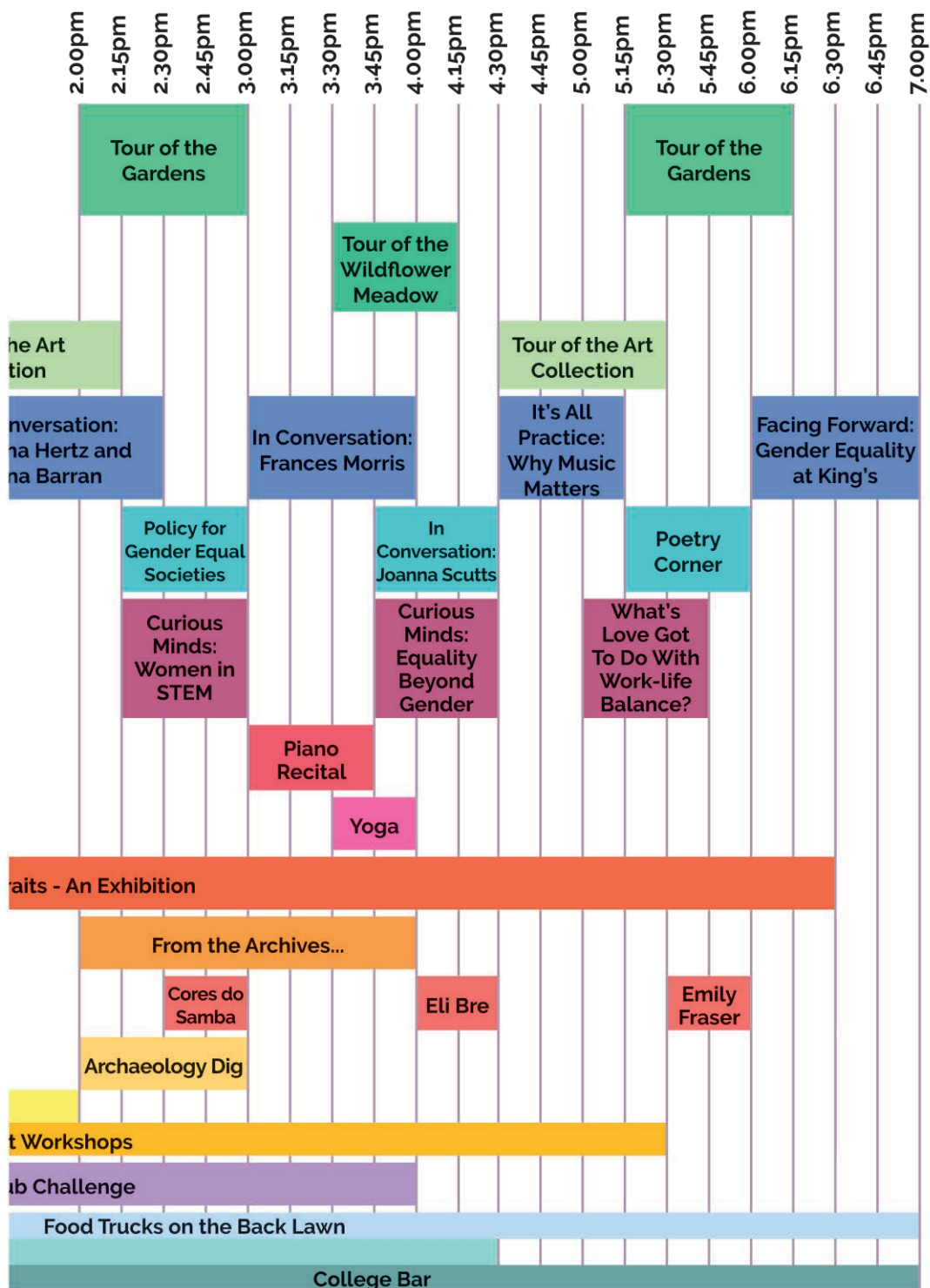
Audit Room

FROM THE COLLEGE ARCHIVES

Women have been a vital part of the King's community since its foundation in 1441. This exhibition from the College Archives looks at this rich history and in particular at the remarkable changes that took place in the 100 years between the founding of Girton and Newnham and the first admission of women as undergraduate students at King's in 1972.







FROM 2.15PM

2.15pm - 3.00pm

PANEL DISCUSSION

River Tent

POLICY FOR GENDER EQUAL SOCIETIES

Award-winning EU gender equality policy specialist **Halliki Woolma** (KC 2007) joins the Director of the University of Cambridge Centre for Gender Studies, **Jude Browne** (KC 2008), to discuss how legislation and policy can help build fairer societies and tackle urgent issues such as economic inequality and violence against women.

2.15pm - 3.00pm

TALK

Keynes Hall

CURIOUS MINDS: WOMEN IN STEM

The third in a series of four sessions throughout the day giving King's students and academics five minutes to explain their research.

In this session, five King's researchers tackle topics including Antarctic conservation and biodiversity, Machine Learning, and the composition of dark matter. Introduced by **Anne Davis** (KC 1986).

Speakers: Beth Doherty Jasmine Lee
 María Gutiérrez Sarah Williams
 Katie Collins

2.30pm - 3.00pm

MUSIC

Bridge Tent

CORES DO SAMBA

Have fun in the Bridge Tent with some uplifting live music from **Cores do Samba**.

3.00pm - 3.45pm

MUSIC

*Provost's Lodge
Drawing Room*

PIANO RECITAL: A CELEBRATION OF WOMEN COMPOSER-PIANISTS

Award-winning pianist and writer **Susan Tomes** (KC 1972) – the first woman to read music at King's – plays pieces from seven women composer-pianists, including Fanny Mendelssohn and Clara Schumann.

Pre-booked tickets only – fully booked.

FROM 3.00PM

3.00pm - 4.00pm **TALK**

Meadow Tent

CONTEMPORARY ART IN TIMES OF CRISIS: FRANCES MORRIS IN CONVERSATION

What duty does an artist – and the art sector – have to ask the big questions about the times we live in, and to make us reflect and act differently? **Frances Morris** (KC 1978), Director Emeritus of Tate Modern talks about what art can – or can't – do, and why it matters.

3.30pm - 4.00pm **YOGA**

Bodley's Court

YOGA SESSION

Join the King's Yoga Society for a beginner-friendly yoga class in the lovely grounds of Bodley's Court.

Pre-booked tickets only – fully booked.

3.30pm - 4.15pm **FAMILY-FRIENDLY TOUR**

Meeting Point: Meadow

TOUR OF THE WILDFLOWER MEADOW

A family-friendly tour of the College wildflower meadow and its biodiversity impact, with zoologist **Gabriela Montejo-Kovacevich** (KC 2022).

Meet at the meadow 5 minutes before the start time. Pre-booked tickets only – tour fully booked.

3.45pm - 4.30pm **TALK**

Meadow Tent

FREE RADICALS: IN CONVERSATION WITH JOANNA SCUTTS

Author and historian **Joanna Scutts** (KC 1997) talks to **Maud Ellmann** (KC 1972) about her latest book *Hotbed*, the story of a secret women's club in bohemian New York who met to discuss politics, art, and literature.

FROM 3.45PM

3.45pm - 4.30pm

TALK

Keynes Hall

CURIOUS MINDS: EQUALITY BEYOND GENDER

The last in a series of four sessions throughout the day giving King's students and academics five minutes to explain their research.

Hear from King's researchers on topics including punishment and social control, property ownership, informal labour, and misinformation on social media. Introduced by **Perveez Mody** (KC 2001).

Speakers: Debolina Majumder Miri Zilka
Joanna Kusiak Kate Herrity
Yara Kyrychenko

4.00pm - 4.30pm

MUSIC

Bridge Tent

ELI BRE

Enjoy a break with music from singer-songwriter **Eli Bre**.

4.30pm - 5.15pm

TALK

Meadow Tent

IT'S ALL PRACTICE: WHY MUSIC MATTERS

Join **Judith Weir** (KC 1973) – first female Master of the King's Music - and composer **Kate Whitley** (KC 2007) in conversation as they reflect on music's role in society, why music in schools matters, and what shapes their musical lives.

4.30pm - 5.30pm

TOUR

Meeting Point: Hall

TOUR OF THE COLLEGE ART COLLECTION

Art historian **Sophie Pickford** (KC 1997) hosts a walking tour of the College's wide-ranging art collection.

Meet in Hall 5 minutes before the start time. Pre-booked tickets only – tour fully booked.

5.15pm - 6.15pm

TOUR

*Meeting Point:
Bodley's Court*

TOUR OF THE COLLEGE GARDENS

Take a walk around the beautiful King's gardens with Head Gardener **Steven Coghill**.

Meet in Bodley's Court 5 minutes before the start time. Pre-booked tickets only – tour fully booked.

FROM 5.00PM

5.00pm - 5.45pm **TALK**

Keynes Hall

WHAT'S LOVE GOT TO DO WITH WORK-LIFE BALANCE?

Kim McCabe (KC 1985), author and founder of Rites for Girls, explores some of the big questions on how we can better equip girls to take charge of their emotional, social and mental well-being as they grow up.

Suitable for ages 13+.

5.15pm - 6.00pm **POETRY**

River Tent

POETRY CORNER

Three King's poets – **Kate Newmann** (KC 1985), **Kate Miller** (KC 1973) and **Isabel Bermudez** (KC 1989) join us to perform some of their work.

5.30pm - 6.00pm **MUSIC**

Bridge Tent

EMILY FRASER

Wind down for the day with live music from local singer-songwriter **Emily Fraser**.

6.00pm - 7.00pm **PANEL DISCUSSION**

Meadow Tent

FACING FORWARD: GENDER EQUALITY AT KING'S

We've come a long way in gender equality and women's education since women were first admitted as students to King's in 1972 - but there's still a long way to go.

King's Senior Tutor **Myfanwy Hill** (KC 2020), Research Manager **Gillian Griffiths** (KC 1980), recent graduate **Brenna Salkin** (KC 2018) and authors of the updated Spurling Report, **Auriane Terki-Mignot** (KC 2017) and **Charis Nogosseck**, discuss the challenges we still face, and what could – and should – be done next, as we bring the Festival to a close.

ON THROUGHOUT THE DAY

There's a host of things to see, hear and drop-in to at any time across the day. Be one of the first to see the new exhibition of portraits of King's women by award-winning photographer Jooney Woodward in the Chapel; listen to some great live music; take part in a rowing challenge; grab a bite to eat from one of the food trucks; or just enjoy chilling out in the beautiful King's grounds.

10.00am - 6.30pm

EXHIBITION

Chapel

50 PORTRAITS - AN EXHIBITION

The launch of a major new exhibition of 50 commissioned portraits of King's women by award-winning photographer **Jooney Woodward**, featuring students, staff, Fellows and alumnae.

The exhibition will remain in the Chapel after the Festival, and after the close of the exhibition the portraits will become part of the College's permanent art collection.

11.00am - 1.00pm

2.00pm - 4.00pm

EXHIBITION

Audit Room

FROM THE COLLEGE ARCHIVES

Women have been a vital part of the King's community since its foundation in 1441.

This exhibition from the College Archives looks at this rich history and in particular at the remarkable changes that took place in the 100 years between the founding of Girton and Newnham and the first admission of women as undergraduate students at King's in 1972.

10.00am - 6.00pm

MUSIC

Bridge Tent

LIVE MUSIC

Enjoy live music throughout the day in the Bridge Tent on the the Back Lawn from some of Cambridge's finest performers and bands.

10.00am - 5.30pm

**FAMILY-FRIENDLY
ACTIVITY**

*Family Activity Tent,
Back Lawn*

FAMILY ACTIVITIES

A range of activities for all ages will be taking place during the day in the Family Activity Tent, along with drop-in things to do inside and out, from arts and crafts to giant Jenga, chess, draughts and Connect 4.

Activities include:

10.00am - 5.30pm

Art Workshops

Nature-inspired art workshops throughout the day

11.00am - 12.00pm and 2.00pm - 3.00pm

Archaeological Dig

King's College Research Associate **Edgard Camarós** and Research Fellows **Katie Campbell** and **Katie Haworth** with amazing bones and artefacts waiting for you to come and uncover the past.

11.00am - 2.00pm

Face Painting

Two face painters will have their brushes at the ready from 11.00am - 2.00pm.

12.30pm - 1.30pm

Animal Bones Exhibition

An interactive animal bones exhibition with King's Senior Tutor (and veterinary surgeon) **Myfanwy Hill** (KC 2020).

12.00pm - 4.00pm

**FAMILY-FRIENDLY
ACTIVITY**

KCBC Tent, Back Lawn

TAKE THE BOAT CLUB CHALLENGE!

The King's College Boat Club rowers will be running a family-friendly challenge on their ergs, with prizes for the fastest rowers in each age category! Come and give it a go, and meet the current crews.

PRACTICALITIES



OPENING TIMES

The College will be open from 10.00am – 7.00pm.



LEAVING AND RE-JOINING THE FESTIVAL

You will be given a wristband on arrival. Please show this at the gate when re-entering the College to re-join the Festival.



INFORMATION POINT

Information about the Festival and events throughout the day will be available at the Information Point, including changes to the programme. Information will also be displayed on the big screen (Back Lawn). The Information Point can be found to the right of the food trucks on the Back Lawn (opposite the Library arches). Staff and volunteers can be identified by their purple Festival crew T-shirts.



CHAPEL

The Chapel will be open from 10.00am until 6.30pm. You are welcome to go in at any time.



WATER STATIONS

Refills for your water bottles are available on the Back Lawn.



TOUR MEETING POINTS

All tours are currently fully booked. Pre-booked tickets only. For the Art Collection Tours meet in the Hall; for the College Garden Tours meet in Bodley's Court; for the Wildflower Meadow Tours meet at the meadow in front of the Chapel.

Please arrive 5 minutes before the tour start time.



LOST CHILDREN

We ask that parents and carers supervise their children at all times, in particular around the banks of the River Cam. Please tell your children to come to the Information Point if you become separated, and let the Information Point know if you lose track of a child. Child wristbands will be given on arrival, on which you can write your mobile number.



FIRST AID

Contact the Information Point in the first instance if medical help is needed, or one of the Festival staff or volunteers. There are responders on site.



LOST PROPERTY

All lost property will be taken to the Information Point. After the Festival is over, any left items will be taken to the Porters' Lodge.



FOOD AND DRINK

A selection of food trucks will be on the Back Lawn from 11.00am until 7.00pm. Meat eaters, pescatarians, vegetarians and vegans will all be catered for.

The College Coffee Shop will be open from 9.30am to 4.30pm serving teas, coffees, pastries and sandwiches.

The College Bar will be open for alcoholic and non alcoholic drinks from 1.00pm - 7.00pm. Please note that the Servery is only open to King's students and Fellows.



THE KING'S SHOP

The King's Shop has a pop-up stall selling King's merchandise and books by Festival authors in the Information Point tent from 10.30am to 4.00pm. The main shop (King's College Visitor Centre), situated on King's Parade opposite the Front Gate, is open from 9.00am to 5.00pm. 15% discount offered on the day.

WC TOILETS

Portaloos are located by Clare College Gate. Indoor and accessible facilities are available in the College Bar area. All toilets are clearly signposted and are indicated on the map on the back cover.



BABY CHANGING

Baby changing facilities are available in the disabled Fellows toilets marked on the map.



WI-FI

The password for the College's guest Wi-Fi is available at the Information Point.



FILMING AND PHOTOGRAPHY

Filming and photography by the College will be taking place throughout the day.



JUST WANT TO RELAX?

There are several seating areas located on the Back Lawn, including in front of the big screen and food trucks; and indoors in the Bar and Coffee Shop.

A special thank you to our donors,
the Hon Margaret Norrie McCain;
and Dr Hermann Hauser (KC 1973) and
Dr Pamela Raspe, Hauser-Raspe Foundation,
who have generously supported the Festival.

All information is correct at the time of going to print, but subject to change.

For more information see the Festival website
www.festivalofwomenatkings.com



FESTIVAL MAP

VENUES

- A - Meadow Tent
- B - River Tent
- C - Bridge Tent
- D - KCBC Tent
- E - Family Activity Tent
- F - Bodley's Court
- G - Audit Room

H - Provost's Lodge Drawing Room

I - Keynes Hall

J - Chapel

FACILITIES

K - Toilets Including Disabled

L - Baby Changing

M - Designated Smoking Area

TOUR MEETING POINTS

N - Meadow

O - Bodley's Court

P - Hall

FOOD AND DRINK

Q - Food Trucks

R - College Coffee Shop

S - College Bar

