

Roof space reflected ceiling plan - east end, 1:50 @ A1

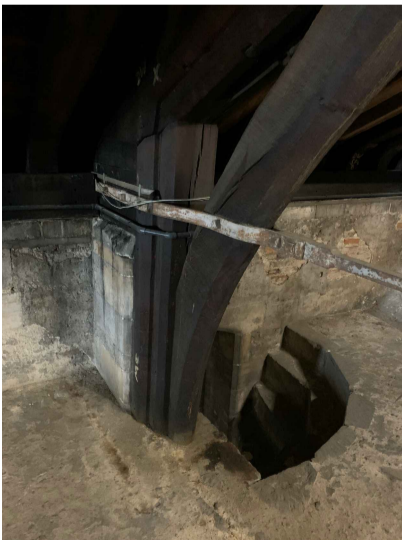
Read with Structural Engineer's Schedule of timber repairs and Specification which refer to defects at the locations shown.



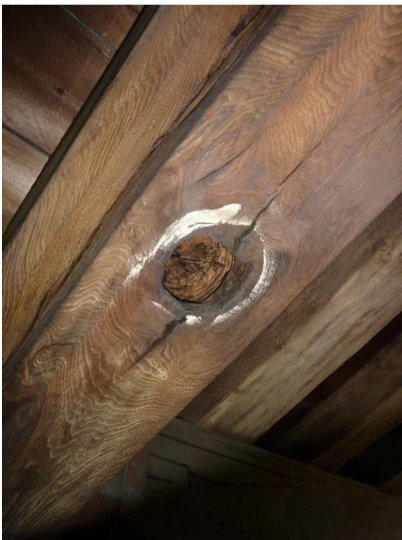
Location 10 - Truss R



Location 11 - Truss R



Location 12 - Truss U



Location 13 - Truss V



Location 14 - Truss V



Location 15 - Truss X



Location 16 - Purlin between Trusses R and S, south side.



Location 17 - Rafters at apex, Bay ST

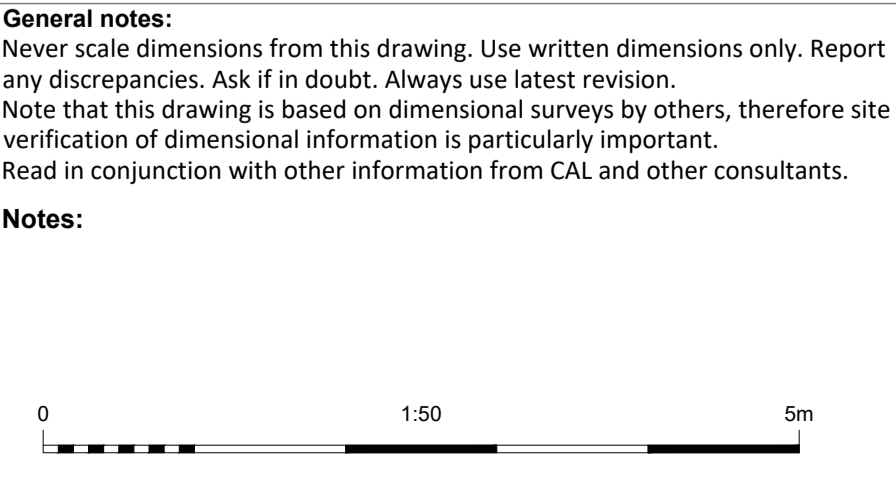
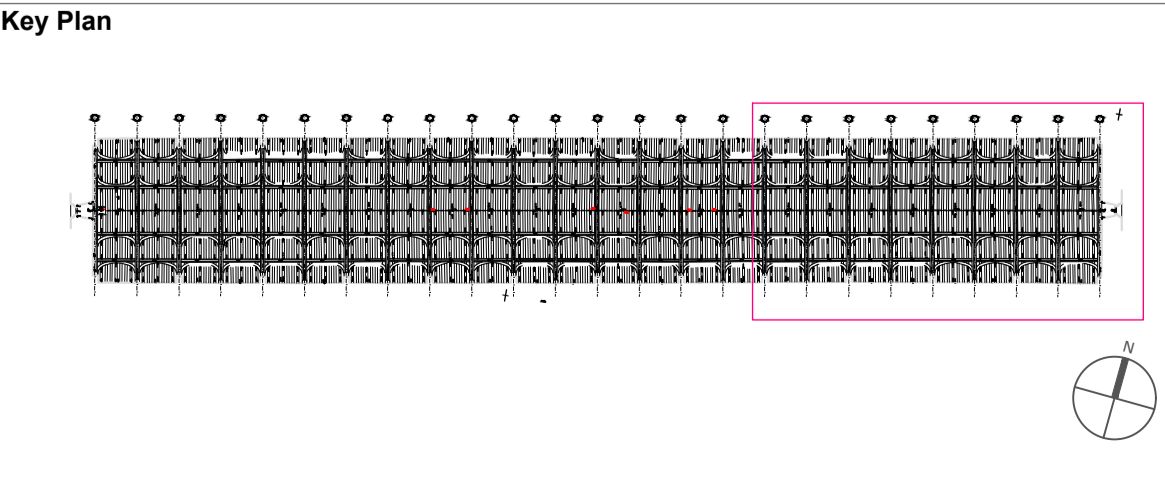
Roofing works:
Provisionally allow for 4no areas of boarding to be carefully taken up to provide access for structural repairs.

Read with drawing and notes for Roof Space works and provisional works to gutters and timbers revealed when opened up.

Rev.	Date	Drn.	Chkd.	Description

Filename: CE 200.1-3 Roof Space Reflected Ceiling Plan.dwg
Printed: 2022-02-13 7:03 PM

This drawing is copyright. All rights in this work are reserved. For full details of copyright terms, read with project covering statement dated 22 December 2014. Also as described in the covering statement this drawing is not released or complete, work being issued prior to completion of a design stage freeze. CAL accept no liability for error or inconsistency. CAL will not be liable if this material is modified or used for any purpose other than the purpose for which it was prepared. Not for use for valuation.



Stage 4 - For Tender				Not for construction		
CLIENT	King's College, Cambridge	SCALE	1:50 @A1	DATE	04.02.22	
PROJECT	Roof Covering Renewal Project	DRAWN	GH	CHECKED	CAL	
DRAWING TITLE	Structural Repairs to Roof Structure - RCP, East End	JOB NUMBER	DRAWING NO.	REVISION	099.4.1 CE 200.3 4.00	

CAROE ARCHITECTURE LTD
Office 5, Unit 8, 23-25 Gwydir St
CAMBRIDGE CB1 2LG
TEL: 01223 472 237
WWW.CAROE.COM

The Surveyor's Office
St Paul's Cathedral
LONDON EC4M 8AD
TEL: 02072 468 341

Caroe Architecture Ltd is a company limited by guarantee, registered in England & Wales. Registered no: 06027260. Levels: House, Great Chamber, Storey, CB10 3PH. ALL RIGHTS RESERVED