

Roof space reflected ceiling plan - west end, 1:50 @ A1

Read with Structural Engineer's Schedule of timber repairs and Specification which refer to defects at the locations shown.



Location 1 - Truss A



Location 1 - Truss A



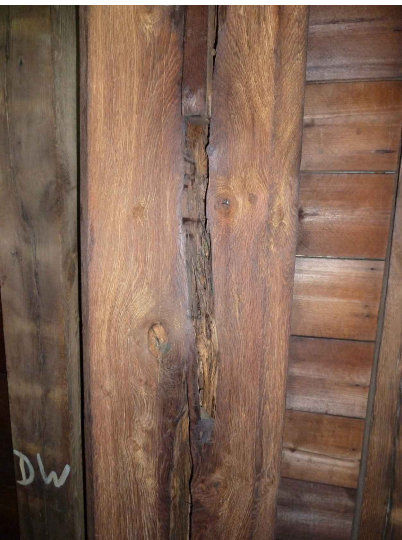
Location 2 - Truss E



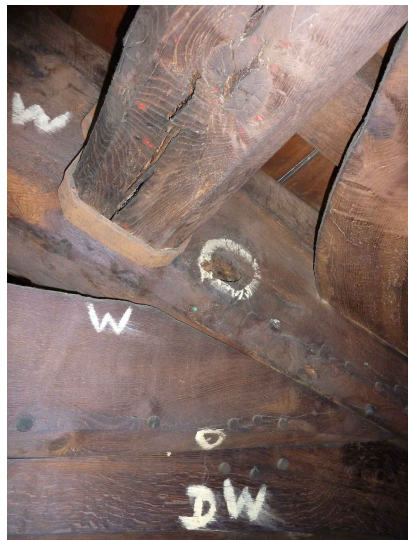
Location 2 - Truss E



Location 3 - Truss F



Location 4 - Truss F



Location 5 - Truss H

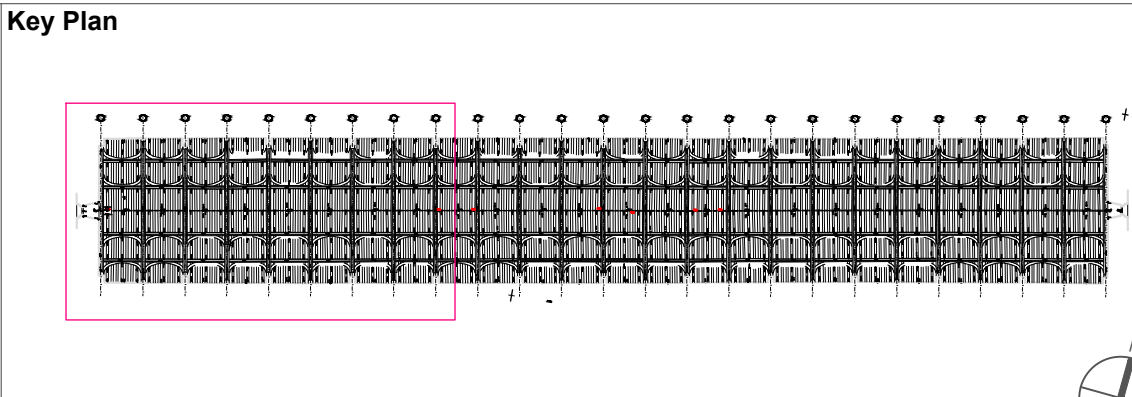


Location 6 - Truss I

Roofing works:
Provisionally allow for 4no areas of boarding to be carefully taken up to provide access for structural repairs.

Read with drawing and notes for Roof Space works and provisional works to gutters and timbers revealed when opened up.

Rev.	Date	Drn.	Chkd.	Description



General notes:
Never scale dimensions from this drawing. Use written dimensions only. Report any discrepancies. Ask if in doubt. Always use latest revision.
Note that this drawing is based on dimensional surveys by others, therefore site verification of dimensional information is particularly important.
Read in conjunction with other information from CAL and other consultants.

Notes:



Stage 4 - For Tender

CLIENT
King's College, Cambridge
PROJECT
Roof Covering Renewal Project
DRAWING TITLE
Structural Repairs to Main Roof Structure - RCP, west end

Not for construction

SCALE
1:50 @A1
DATE
04.02.22
DRAWN
GH
CHECKED
CAL
JOB NUMBER
DRAWING NO.
REVISION

099.4.1 CE 200.1 4.00



CAROE ARCHITECTURE LTD
Office 5, Unit 8, 23-25 Gwydir St
CAMBRIDGE CB1 2LG
TEL: 01223 472 237
WWW.CAROE.COM

The Surveyor's Office
St Paul's Cathedral
LONDON EC4M 8AD
TEL: 02072 468 341

Caroe Architecture Ltd is a company limited by guarantee, registered in England & Wales. Registered no: 06027260. Level 10, One, Great Chesterford, Essex CB10 3PH. ALL RIGHTS RESERVED

This drawing is copyright. All rights in this work are reserved. For full details of copyright terms, read with project covering statement dated 22 December 2014. Also as described in the covering statement this drawing is not material or complete, work being carried prior to completion of a design stage freeze. CAL accept no liability for error or inconsistency. CAL shall not be liable if this material is modified or used for any purpose other than the purpose for which it was prepared. Not for use for valuation.

Filename: CE 200.1-3 Roof Space Reflected Ceiling Plan.dwg
Printed: 2022-02-13 6:55 PM